



# PORTABLE / LABORATORY DENSITY METER

---

FOR LIQUEFIED PETROLEUM GASES (LPG)

---

**LPGDi**

**TIME-PROVED TECHNOLOGY**

# Specifications



<b>Measuring range:</b>	
Density	0.4750...1.0000 g/cm <sup>3</sup> (475...1000 kg/ m <sup>3</sup> )
Density Standard calibration	0.6... 1.2 g/cm <sup>3</sup> (600... 1200 kg/m <sup>3</sup> )
	0.9... 1.8 g/cm <sup>3</sup> (900... 1800 kg/m <sup>3</sup> )
Temperature	0...+40°C (0...+105°F)
<b>Accuracy:</b>	
Density	±0.0005 g/cm <sup>3</sup> ( ±0.5 kg/m <sup>3</sup> )
Temperature	±0.1°C (±0.2°F)
<b>Repeatability:</b>	
Density	±0.00025 g/cm <sup>3</sup> (±0.25 kg/m <sup>3</sup> )
Temperature	±0.1°C (±0.2°F)
<b>Resolution:</b>	
Density	0.0001 g/cm <sup>3</sup> (0.1 kg/m <sup>3</sup> )
Temperature	±0.01°C (0.02°F)
Supported measuring units	Real Density: g/cm <sup>3</sup> , kg/m <sup>3</sup> , lb/gal, lb/ft <sup>3</sup> ; API; SG Referred Density: at 15°C, 20°C, 60°F; API60; SG60 Tables ASTM D 1250 Alcohol Tables Temperature in °C or °F
Ambient temperature	-40... +85°C (-40... +185°F)
Maximal Pressure	16 bar
<b>Sensor:</b>	
Type	Vibrating element (Resonance principle)
Material	Stainless steel SS 316 L; NiSpan C; Hastelloy C22, Teflon
Contact Surface Material	Duralumin
<b>Intrinsically safe:</b>	
Controller	ATEX II (2G) EEx ib [ia] IIB T4
Sensor	ATEX II 1G EEx ia IIB T4
Power supply	110 - 230 V with adapter 12/24 VDC (car lighter)
<b>Dimensions, weight:</b>	
Height	245 mm (9.6 in)
Length	225 mm (8.8 in)
Cylinder diameter	120 mm (4.7 in)
Weight	6 kg (13.2 lb)
Temperature compensation	Automatic
Sample volume	200 ml
Data Transfer	RS 232, Bluetooth
Data handling	Backlighted LCD display (2x16) Local memory up to 1000 results with date/time stamped Build in Bluetooth for data transfer to printer or PC Optional Windows - based software
Delivery	Delivered in compact carrying case

Unique Laboratory portable Density Meter is a new development especially for liquefied petroleum gases (LPG) measuring. It is based on the resonant method of density measurements and uses small sample volume. Obtained results are instantly converted to relative density (15°C or 20°C or 60°F) in accordance with ASTM D1250 tables. Readings on the LCD facilitate measuring process and eliminate eventual human error. Compact design makes suitable to any place in your laboratory. Additional car power option makes it portable. Combination with PC or Pocket PC makes it as a complete data managing system. Windows based Software allows necessary data processing and simplifies operation for personnel.

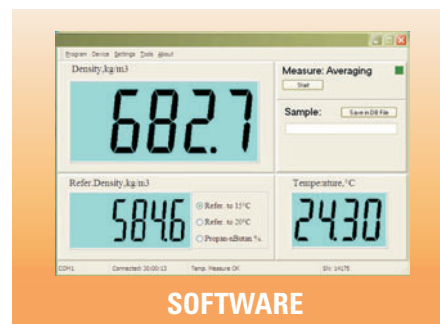
Data transmission to PC, pocket PC or portable printer via Bluetooth connection. Compatible for a Windows XP/Vista/7.

## Advantages

- Precise density and temperature in seconds
- Excellent correlation to ASTM D1657
- Small sample volume
- Readings on LCD
- Easy to operate
- Automatic temperature compensation
- Data transfer to PC

## Applications

- Gases fuel stations
- LPG storage tanks
- Product identification and consistency
- Calculation of propane/n-butane mass concentration
- Petroleum products process transfer
- Monitoring of technological process heating
- Liquefied Petroleum Gases (LPG)



SOFTWARE

**For more information please visit [www.lemis-instruments.com](http://www.lemis-instruments.com)**



**USA**  
**LEMIS USA, Inc.**  
2121 Golden Road, Suite 2A  
The Woodlands  
TX 77380, USA  
Ph.: +1 281 465 8441  
Fax: +1 281 465 8224

**EUROPE**  
**AS LEMIS Baltic**  
26 Ganību dambis  
Rīga, LV-1005  
Latvia, EU  
Ph.: +371 6738 3223  
Fax: +371 6738 3270

**INDIA**  
**LEMIS India PVT LTD**  
603, Platinum Technopark, Plot-17/18  
Sector-30A, Vashi  
Vashi - Navi Mumbai. 400705, INDIA  
Ph.: +91 22 6721 5655  
Fax: +91 22 6794 2666

**E-mail: [info@lemis-instruments.com](mailto:info@lemis-instruments.com)**